



Please ensure that you have grounded yourself

Before attempting this procedure.

All directions are given assuming the screen at the top and dock connector towards you unless stated otherwise.

Make sure the work surface is clean and soft – You do not want to scratch your iPod.

If someone selling you a battery has directed you to these instructions, you should wonder what level of technical support and backup to expect from someone who can't produce their own instructions. Our products have all been tested by our technicians and are used by ourselves in our professional fitting services.

Thousands of satisfied customers can't be wrong.

www.ipoddoctor.net



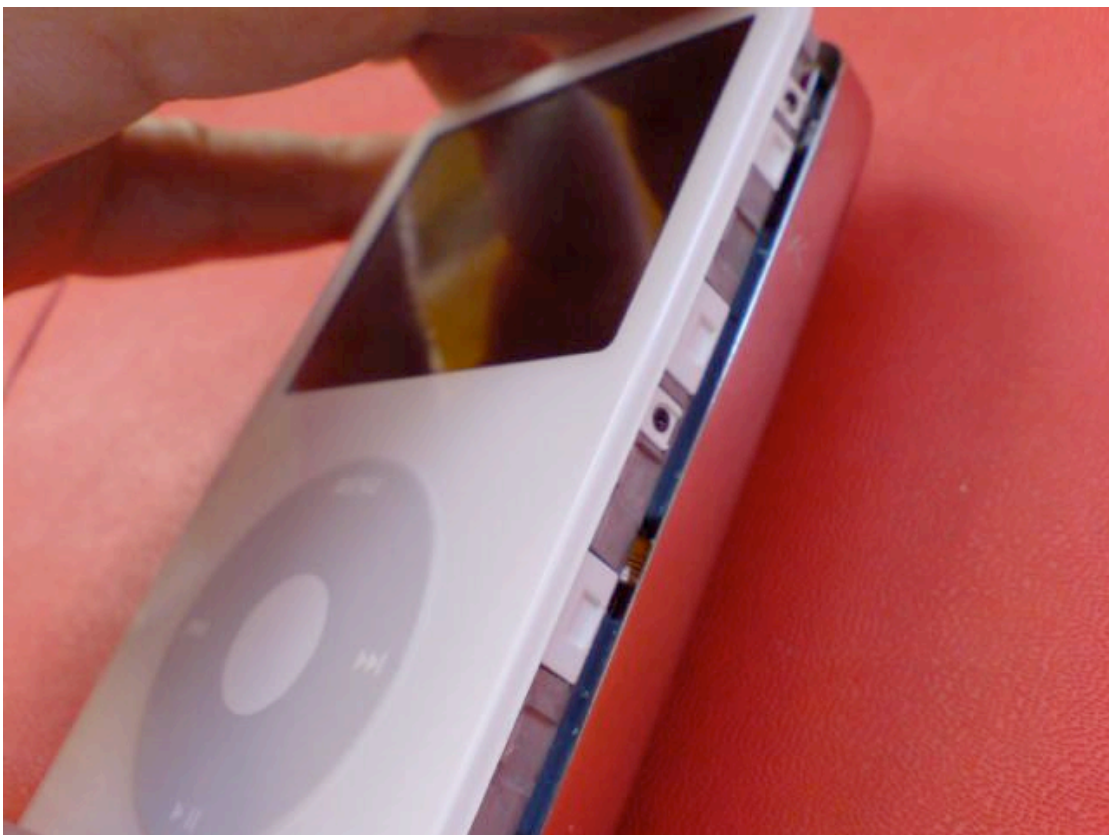
First - Turn off the iPod and slide the hold switch on so that the red part shows.
Unpack the battery and tools and lay them out on the table.



Hold the iPod as shown and push down **gently** with the thumb and up with the middle finger so that the iPod flexes diagonally.
You should see a small gap open in the centre.



Insert the tool into the gap, put the iPod down and slide the tool up and down the gap opening up the full length of the seam. Sometimes you may need to tilt the tool up to open the gap a little wider. The purpose is to release the small snap catches that hold the 2 parts together.

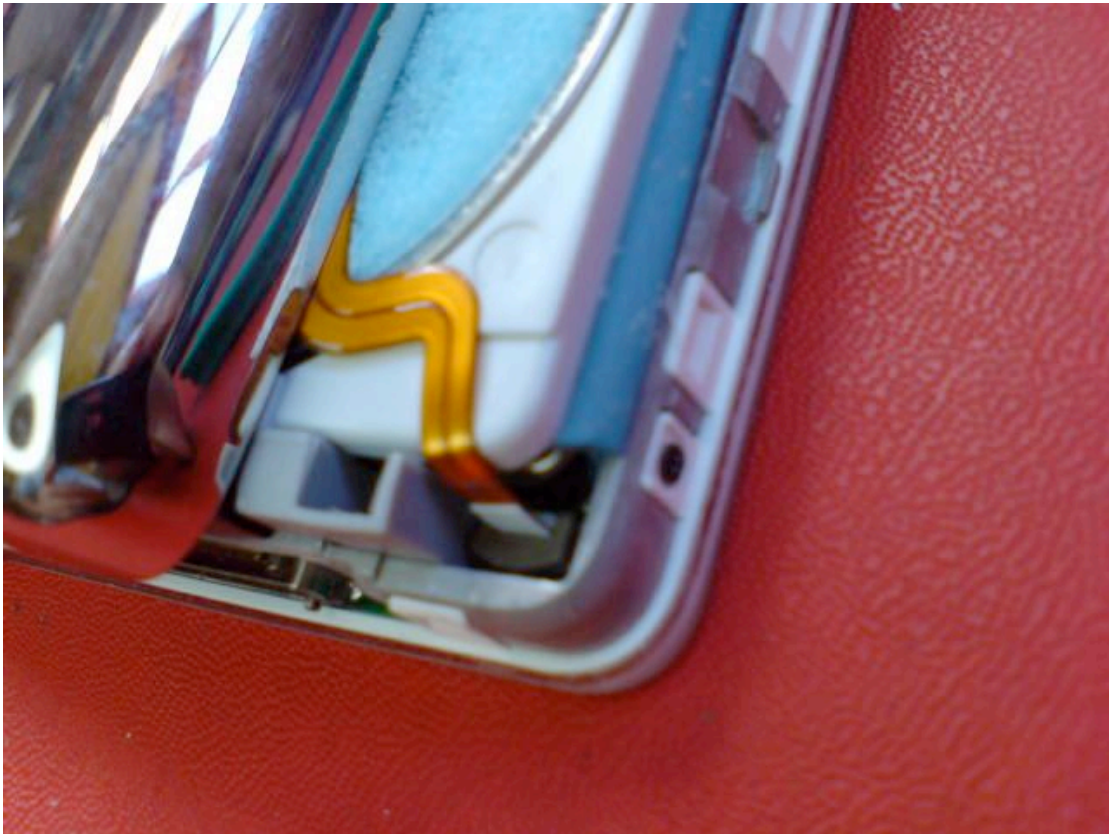


Once one side is released completely it is possible to turn it face down and gently push the metal cover across to release the other side. Be very careful not to lift the cover more than 10mm as there are cables underneath that could be damaged.



Lift the metal cover just clear and move it to the left 20mm.
You can now see the battery cable and connector.





There is a brown locking collar around the top of the connector.

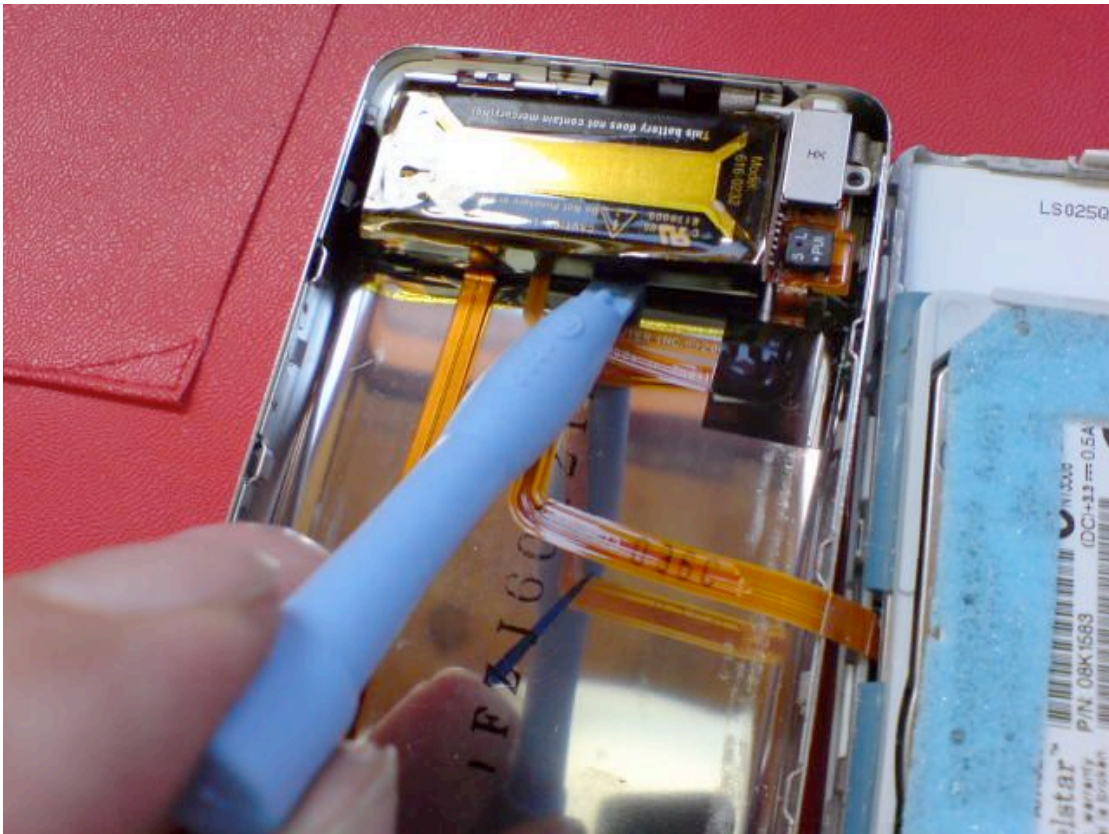
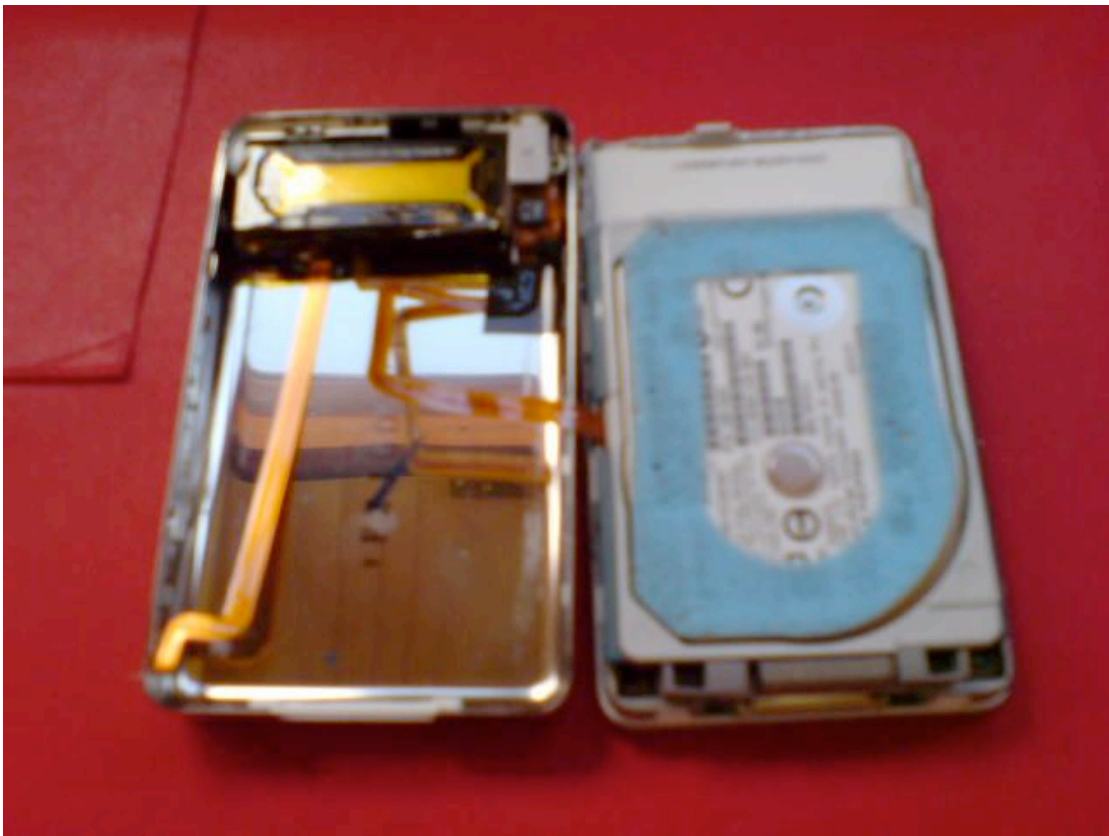


Use the screwdriver to lift the collar. Lift the r/h side first and then in the centre as shown.

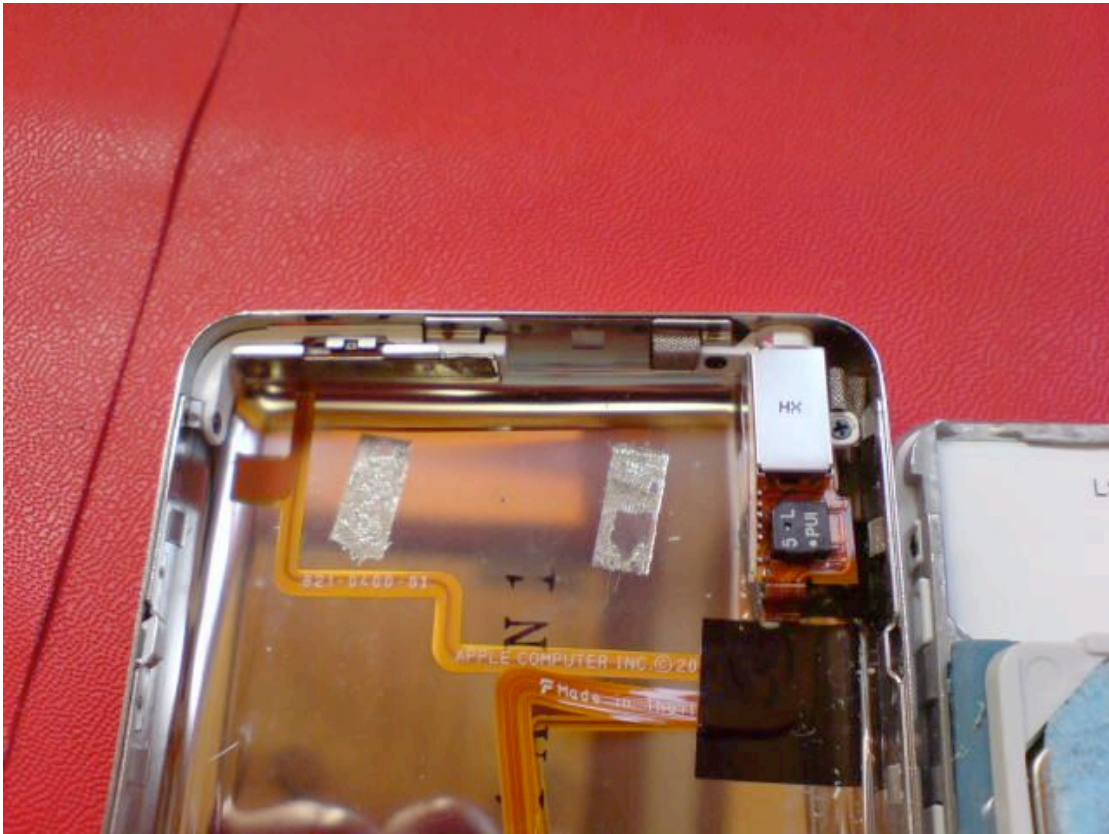
The cable should lift out easily.

You can now flip the metal case over to the left.

Be careful as it is still connected to the headphone socket by a cable.



Use the other tool to gently pry the battery up on the R/H side.
Do not try to pry on the left half as the cables run under the battery.
The battery is stuck in place by sticky tape underneath and also on the back of the hold switch assembly.

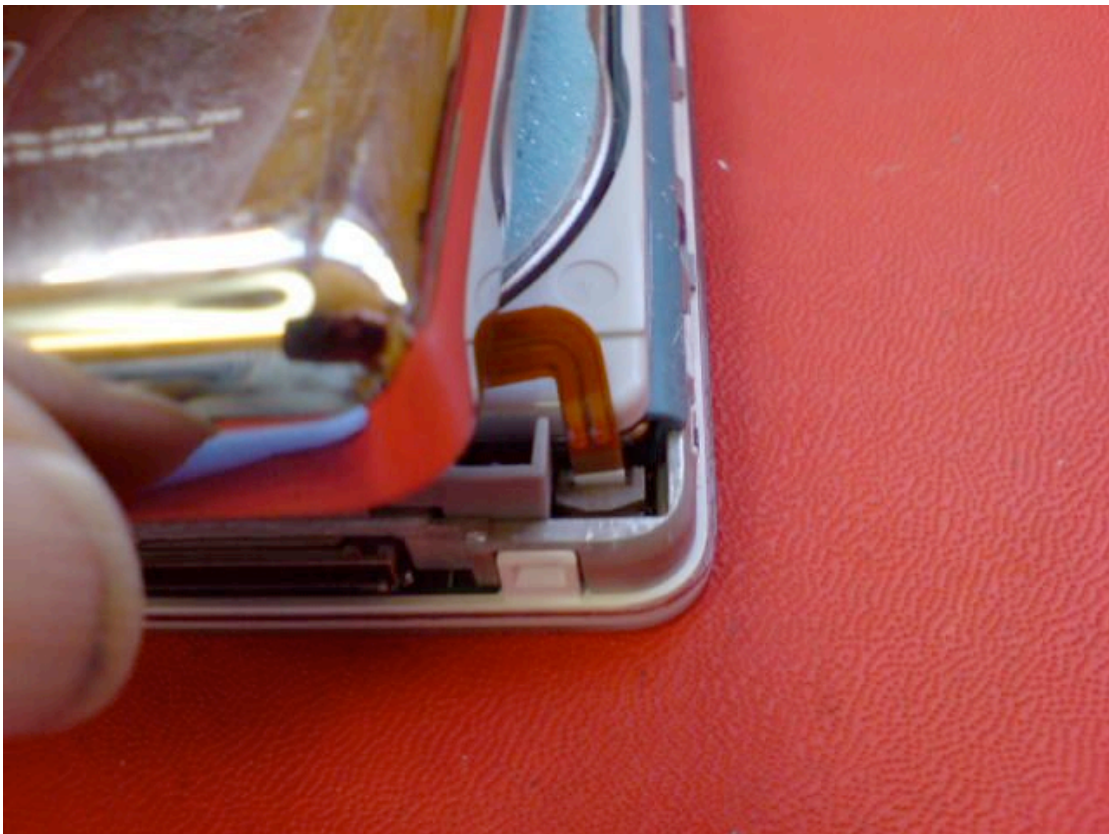


Gently insert the new battery und push down to stick into place.
Make sure the cable is on the L/H side.

Check that the hard drive is seated properly and both of the plastic shock absorbers are in place either side of the dock connector as below.



Flip the metal case back over.



Insert the battery cable as above then push down the locking collar until it clicks.



Place the metal cover over the iPod and make sure there is a uniform gap of 2-4mm all the way round.



Push down with the flat of your hand until it snaps into place all the way round.