

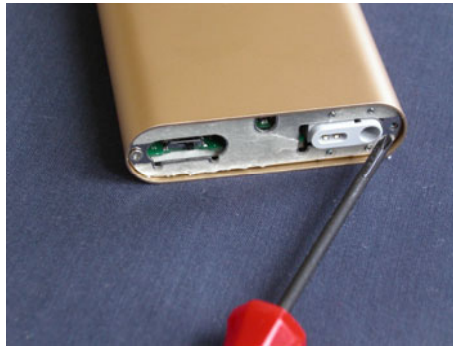
iPod Doctor



iPod MINI Replacement Battery



Use the blue tool to carefully pry the white plastic cover from the top of the iPod. The cover should be attached to the case by soft glue.



Use the phillips head screwdriver provided to remove the two screws at the top of the iPod.



Use the tip of the blue tool to carefully pry the white plastic cover from the bottom of the iPod. The cover should be attached to the case by a soft glue. Be careful the glue does not snap back onto the connector. (Mark the cover with a pencil so that you can replace it the correct way up later).



Beneath the bottom case cover is a small metal clip. Remove this clip by placing the tip of a screwdriver (not supplied) in each of the four corners of the clip, prying each side loose. The metal clip should come free from the iPod. Be very careful not to damage the cable behind the plate (on the left in picture). The ideal tool for this is a pair of Circlip pliers.



Before we can slide out the motherboard, we need to disconnect the connector at the bottom of the iPod. Use the round tool to gently pop the connector out of its socket. The tip goes just beneath the brown cable, move one side up 1mm then the other alternately 5-6 times until the plug comes out of the white socket.

Be very careful doing this as the connector is very fragile.



Push from the bottom and slide the motherboard out of the top of the iPod case. The motherboard will slide out from the case and will give access to the battery. The battery can be removed from the motherboard by gently lifting it and flipping it over. Do not worry too much if you break the sticky pad. We can now remove the power connector from the socket.



Take out the old power connector by gently gripping the sides of the connector and lifting it free from the power socket. You can then plug in the new battery and place it back in its position on the motherboard. Reassemble the iPod, put back the two screws and the top and bottom white case covers. The case covers should stick to the original glue. Your new battery is now ready for charging.

Your new battery will need a minimum of three hours of charging before first use. It will attain full capacity after 5-10 charge/discharge cycles.