

Replacement High Capacity  
iPod Batteries



[www.ipoddoctor.co.uk](http://www.ipoddoctor.co.uk)



Please ensure that you have grounded yourself

Before attempting this procedure.

All directions are given assuming the screen at the top and dock connector towards you unless stated otherwise.

Make sure the work surface is clean and soft – You do not want to scratch your iPod.

If someone selling you a battery has directed you to these instructions, you should wonder what level of technical support and backup to expect from someone who can't produce their own instructions. Our products have all been tested by our technicians and are used by ourselves in our professional fitting services.

Thousands of satisfied customers can't be wrong.

[www.ipoddoctor.co.uk](http://www.ipoddoctor.co.uk)

Please make sure that you read these instructions thoroughly before starting

If you do not feel 100% confident that you can complete this procedure, please order our professional fitting service



Unpack the battery and tools and lay them out on the table.



**\* IMPORTANT \***

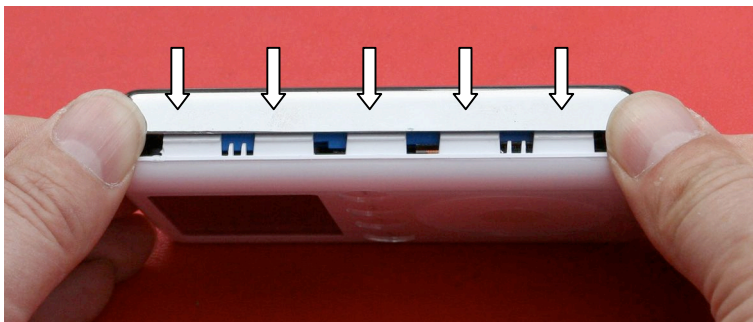
Make sure the iPod is turned off and the hold switch is on.  
(so that the red part shows)



Hold the iPod as shown and push down **gently** with the thumb and up with the middle finger so that the iPod flexes diagonally.  
You should see a small gap open in the centre.



Insert the tool into the gap, put the iPod down and slide the tool up and down the gap opening up the full length of the seam. Sometimes you may need to tilt the tool up to open the gap a little wider. The purpose is to release the small snap catches that hold the 2 parts together.  
NOTE: This is not always an easy process. Expect to fail several times. If the included tools become damaged, you can sharpen it using a craft knife .Be careful not to cut yourself!

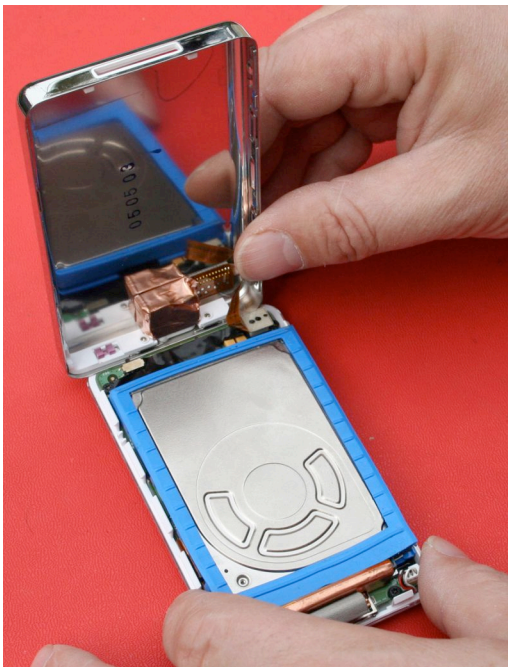


Location of locking tabs

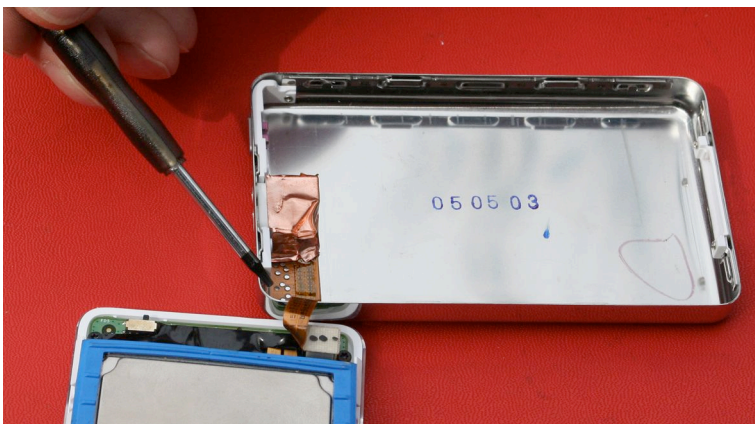


A gentle twist at the top should help release the tabs.

Once one side is released completely it is possible to turn it face down and gently push the metal cover across to release the other side. Be very careful not to lift the cover more than 10mm as there are cables underneath that could be damaged.



Once you have the bottom cover off, GENTLY tip it towards the top as shown. Be very careful of the audio assembly ribbon connector. It is easily damaged.

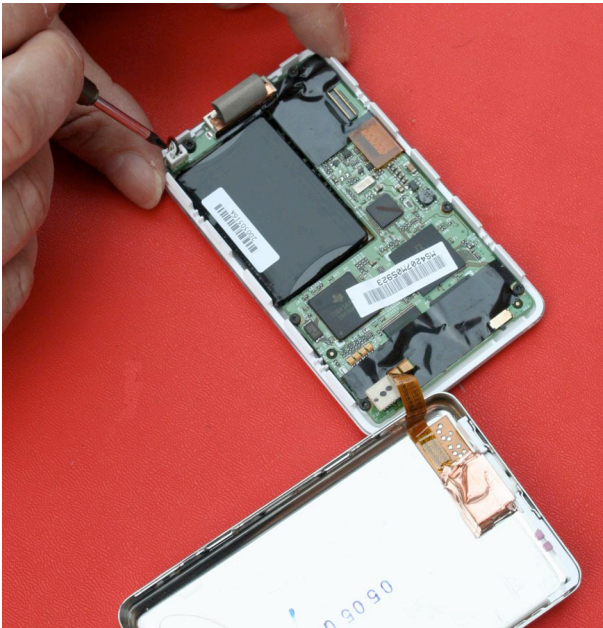


Here is another view of the ribbon connector, with the screwdriver tool pointing toward it. Please do not remove the connector - it is not necessary to replace the battery.



Place the back cover flat on the work surface, and hold the iPod on its side as shown. You can gently lift the hard drive away from the inside of the iPod as shown, exposing its connector on the logic board. The battery may stick to the drive cover, but it is easily removed.

Detach the hard drive from the logic board using your fingernail or the nylon tool under the edge of the connector. Light pressure should release the connector from the board - put the hard drive to one side.



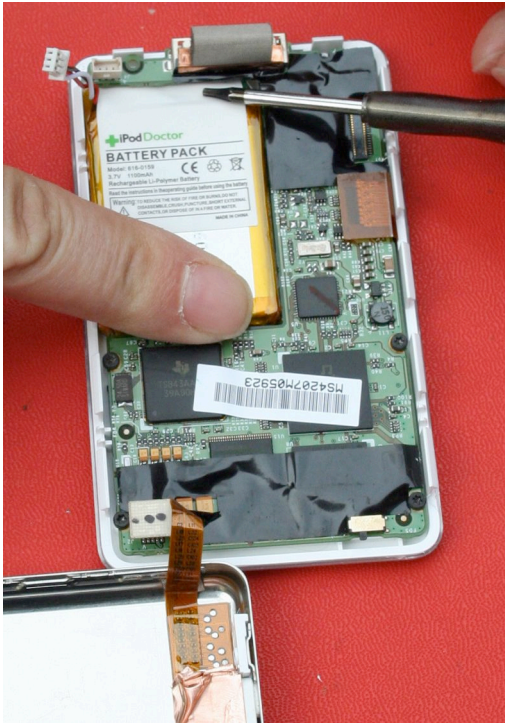
Place the iPod face down at 90 degrees to the back as shown.

Be very careful of the ribbon connector.

Once you have removed the hard drive, you will see the large black battery. Carefully unplug the 3-wire connector from the board and remove it from the unit, save it for proper disposal later.

Using the driver provided, remove the 2 screws from the dock connector side of the logic board.

You will find that the original battery wires go under the logic board and need to be carefully led around the edge to remove.



Lift the new battery wires so that they are pointing straight up and slide the top of the battery under the logic board (where the screwdriver is pointing) until the battery fits in at the bottom (where the finger is pointing). It may help to gently smooth down the bottom corners against the back of your thumbnail before inserting the battery. Now replace the screws.



The wires are thicker than the original battery and require routing over the top of the board and around the battery connector as shown, to fit them inside the case. Do not pull on the wires and be careful not to pinch them when fitting the rear case.



Reconnect the drive cable by locating the cable plug over the socket on the logic board. If you use your finger (as shown) on the back of the cable, you will be able to feel when the plug locates in the socket. Then press down on the cable.

You may hear a “click” as it connects into the logic board, this is normal. You may find this is performed more easily with the unit on its side as you had it during drive removal.

This can be difficult but take your time and be patient.

Put the back cover onto the unit, being careful to ensure that the hold switch aligns over the internal switch properly and the battery wires are not trapped.

Locate the case over the locking tabs on the far side of the unit as shown.



Squeeze the front edge of the iPod together, the back case should snap onto the front easily, just make sure you don't pinch the wires from the new battery.

**Important**

If it does not snap back on easily the battery or drive may not be fitted correctly. Go back and check the drive sits level on the unit.

If you squeeze it back together and it is not fitted correctly you may damage your drive.

Your iPod is now ready to be charged. Make sure that you charge the battery for a minimum of 3 hours, uninterrupted. Overnight is best.

You may need to perform a reset on the iPod, to do so follow these directions:

1. Connect iPod to the Apple iPod Power Adapter and plug the power adapter in or connect iPod to your Mac's built-in FireWire port. Make sure the computer is turned on and isn't set to go to sleep.
2. Toggle the Hold switch on and off. (Set it to Hold, and then turn it off again.)
3. Press and hold the Play/Pause and Menu buttons until the Apple/iPod logo appears. You may need to repeat this step.

If you keep getting a folder icon you may have to restore.

**THIS WILL DELETE ALL YOUR MUSIC FROM THE IPOD**

Download latest iPod updater from Apple

Connect iPod

Run updater, do a Restore not update.

Charge iPod for 12hours

Reload songs.

Test

If you are in any doubt about completing this procedure or if you encounter problems during installation, please order the battery fitting service from our web site. Send in the unit and battery with a note explaining the problem. We will then fit the new battery for you and refund and cancel the original order (less postage).

Thank you for being an iPodDoctor customer!

These instructions are for your information only. iPodDoctor takes no responsibility for any damage caused to your iPod during the fitting of your battery.